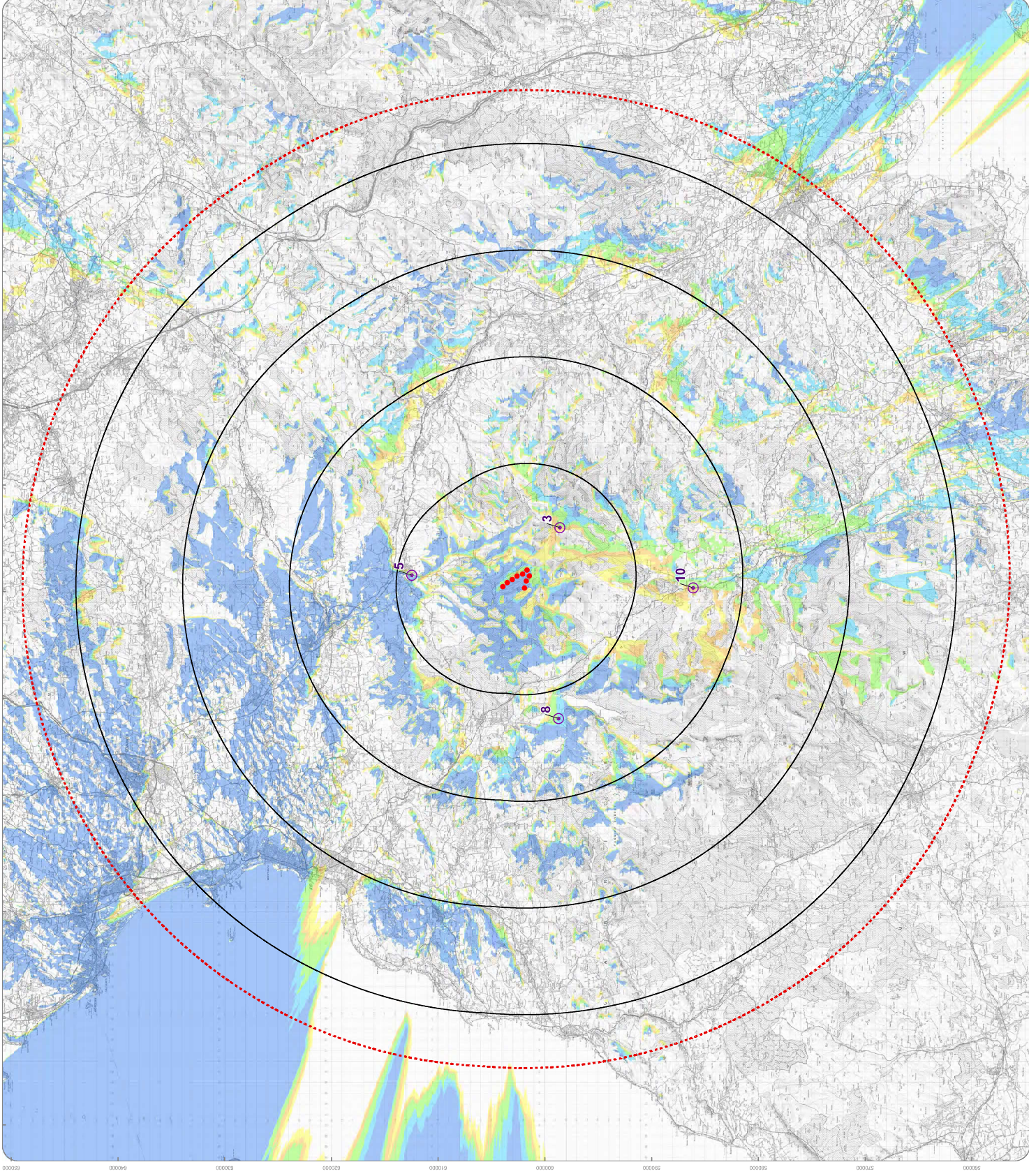


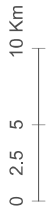
# Legend

- Proposed repowering turbine
  - 10km Radii
  - 45km Study Area
- No. of Blade Tips Theoretically Visible
- 1 - 2
  - 3 - 4
  - 5 - 6
  - 7 - 8
  - 9

- Viewpoints
- 3. Water of Ken
- 5. Entrance to cemetery on southern side of New Cunnock
- 8. Loch Doon
- 10. A713 Carsfad Loch



Blade Tip:	200m	Observer height:	2m
DTM:	OS T57/50 DTM	Surface features:	Excluded
DTM resolution:	10m	Earth curvature:	Included



## WINDY STANDARD REPOWERING SCOPING

### Blade Tip ZTV

Ref No:	211596	Created By:	JM	Rev No:	1
Scale:	1:175,000	Drawing Size:	A1	Date:	07/06/2021
Coordinate System:	BNG OS GB 1936 Datum				