

BALNESPICK WIND FARM



Hello,

Following our exhibitions in October 2023, we would like to invite you to attend further events to learn more about our plans to develop Balnespick Wind Farm, located 5.6km east of Tomatin and 6.6km north-west of Carrbridge.

We hope to submit our application to the Scottish Government later this year and our exhibitions will be able to tell you more about:

- How our plans have evolved
- The opportunities that they present locally
- How we have listened to your feedback

If you have any questions, please get in touch.

 www.balnespickwindfarm.co.uk

 communities@fredolsen.com

 07435 763 900

Exhibitions

We would like to invite you to drop in to one of our local events.

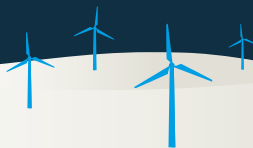
Tuesday 27th August
12noon – 8pm

**The Auditorium,
The Strathdearn, Tomatin,
IV13 7YN**

Wednesday 28th August
11am – 6pm

**Carrbridge Village Hall,
Main Street, Carrbridge,
PH23 3AA**

Our exhibition materials will be available online at www.balnespickwindfarm.co.uk.



About the proposal

We have undertaken a range of environmental and technical assessments.

The findings from these surveys, alongside feedback from the community and stakeholders has helped to inform our final designs.

The plans that we expect to submit to the Scottish Government involve:



9 turbines up to 200m to tip



10MW energy storage facility



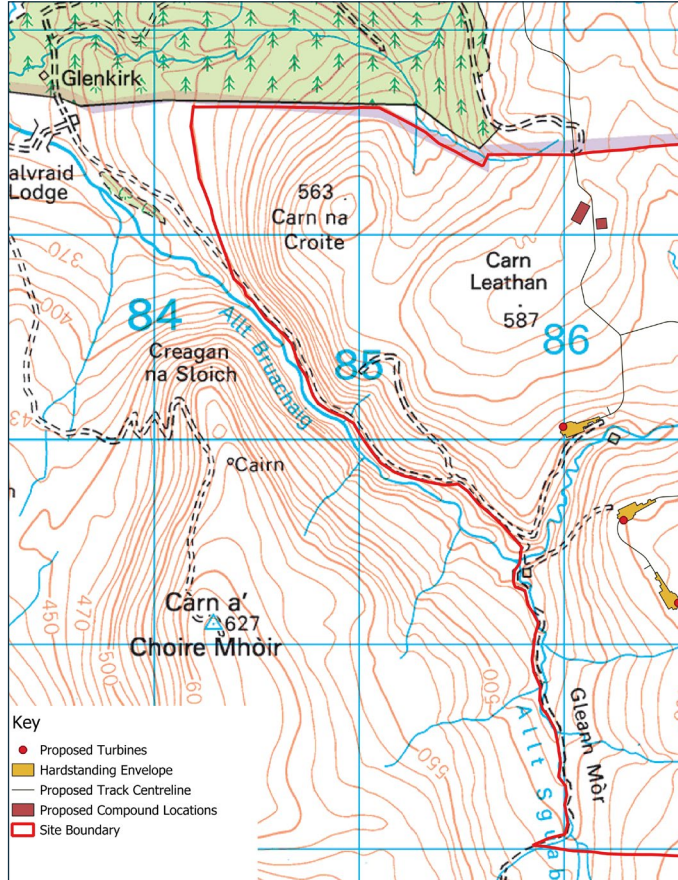
55.8MW wind farm capacity



35 year lifespan



£5,000 per MW community fund



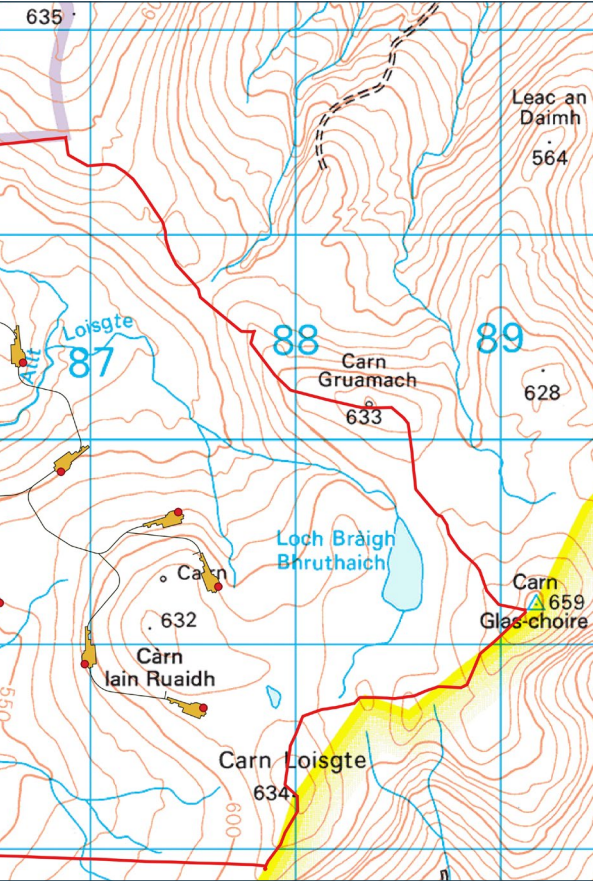
About us

Fred. Olsen Renewables is one of the longest standing renewable energy developers in Scotland.

Our portfolio consists of 258 operational turbines, alongside a further 76 consented.

This, combined with our projects in Norway and Sweden, brings our total operational capacity to 804.9 MW – providing enough power for 698,344 homes.

We are excited about the future. With a pipeline of more than 1GW, central to our success will be collaboration with communities, committing to local businesses and contributing towards Scotland's sustainable future.



Site layout



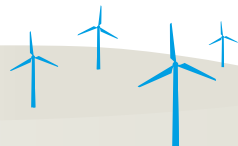
Developing



Constructing



Operating





Community Benefit

If consented, Balnespick Wind Farm will provide around £270,000 per year to the local community. This equates to over £9m in community benefit throughout the 35 year lifespan of the project.

We want to work closely with the communities surrounding Balnespick Wind Farm to ensure that the community benefit can be utilised to strategically address identified local challenges, such as energy consumption, sustaining local facilities, recreation and tourism.

We are very aware of the exciting projects that are currently being delivered locally.

We need your ideas and feedback about what you want to see happen locally. This will allow us to design a community benefit package that reflects your views and aspirations.

Fred. Olsen Renewables pioneered community benefit funds in Scotland, and we have many operational funds in place. We recognise that each fund is different and needs to be responsive to local needs.

We understand that the communities closest to Balnespick have a lot of experience in managing community benefit funds.

The funding from Balnespick Wind Farm can be used by the community to deliver a variety of initiatives. This could include:

- Creating a community benefit fund - managed locally. This could complement existing community benefit funds and be managed in a similar manner, supporting existing community projects and identified future projects.
- Deliver new initiatives such as:
 - A Local Energy Discount Scheme
 - An Energy Efficiency Programme
- Deliver something entirely different - as decided by local residents

We have had many conversations about what opportunities the community benefit fund could present locally. This includes:

Local Energy Discount Scheme

A Local Energy Discount Scheme would provide local residents with an annual discount on their electricity bills. This could be designed in partnership with the community. It could:

- Be open to all residential properties within an approximate 10km radius of the wind farm (c900 properties, this could be up to £277 per annum)
- Be designed to be specific to individual community council areas

- Provide an annual discount to each home
- Make payment directly to the electricity supplier

This scheme is voluntary and does not require any change of supplier or tariff.

As a fixed amount this does not reward higher electricity users over lower users or encourage energy wastefulness.

Local Energy Efficiency Programme (LEEP)

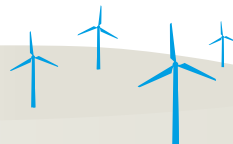
A Local Energy Efficiency Programme (LEEP) could help households install energy efficiency measures.

This fund could:

- Complement existing energy efficiency schemes / financial incentives
- Plug the gap where capital investment can prevent homeowners from progressing

- Support the installation of home energy efficiency measures, such as:
 - Insulation
 - Improved glazing
 - EV chargers
 - Heat pumps
 - Solar technology

This fund could focus on supporting those in need in their own homes, providing direct support for residents and helping them onto a path of zero carbon.



Community Benefit Fund

Establishing a community benefit fund that is designed to support community-wide initiatives and is compatible with existing funding structures and application mechanisms.

This fund could:

- Provide an annual percentage of the funding directly to community council areas that fall within a 10km radius of the site
- Involve the opportunity to split the fund between a regional and a local element – with local communities able to apply to both elements
- Be designed in partnership with the community and have a local decision-making structure

We want to hear your feedback on these suggestions and your ideas. Please complete a feedback form or get in touch directly.

Case Study

Carsphairn Local Energy Discount Scheme (LEDS) has been operational since 2018. One of the first LEDS in Scotland, it is administered by Carsphairn Community Council and fully funded by Windy Standard Wind Farm.

The initiative supports local residents to pay for their energy related bills and addresses the challenge of rising energy costs, helping the fuel poor and minimising fuel poverty.

The scheme is open to all properties that are lived in full time (excluding holiday homes and second homes). Local residents are encouraged to apply into the scheme annually. Since its inception the LEDS has provided over £127,000 in direct payments. In 2022 alone, 101 houses were provided with £400 towards their energy costs.



Liz Holmes, Chair, Carsphairn Community Council, commented:

"The scheme has been very well received by the community and has helped residents to meet their energy costs, which has become increasingly important with the huge increase in these over the last few years.

"As a remote rural community, it is very important that this is an energy, rather than electricity scheme, allowing those who use oil, solid fuel or LPG for heating and those who are not connected to the electricity grid to continue to benefit.

"The LEDS helps to demonstrate the positive impact that wind farms can bring to the area, reaching residents who might not benefit from funding otherwise."

Supply chain

We always seek to employ local services during the construction and operation of our wind farms – helping to maximise local economic opportunities.

Services that we have previously employed include:

- Local accommodation
- Plant hire
- Caterers
- Groundworks
- Fencers
- Concrete and aggregate




We hope that this information has been useful and we look forward to discussing our plans further with you at the forthcoming events.

Visit www.balnespickwindfarm.co.uk for further information.



 www.balnespickwindfarm.co.uk

 communities@fredolsen.com

 07435 763 900

