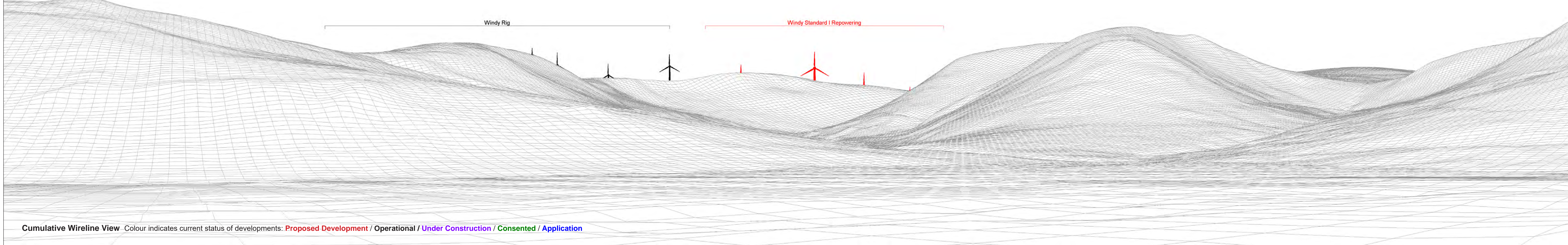


This image provides landscape and visual context only



Existing View - Photography taken prior to the construction of Windy Rig turbines

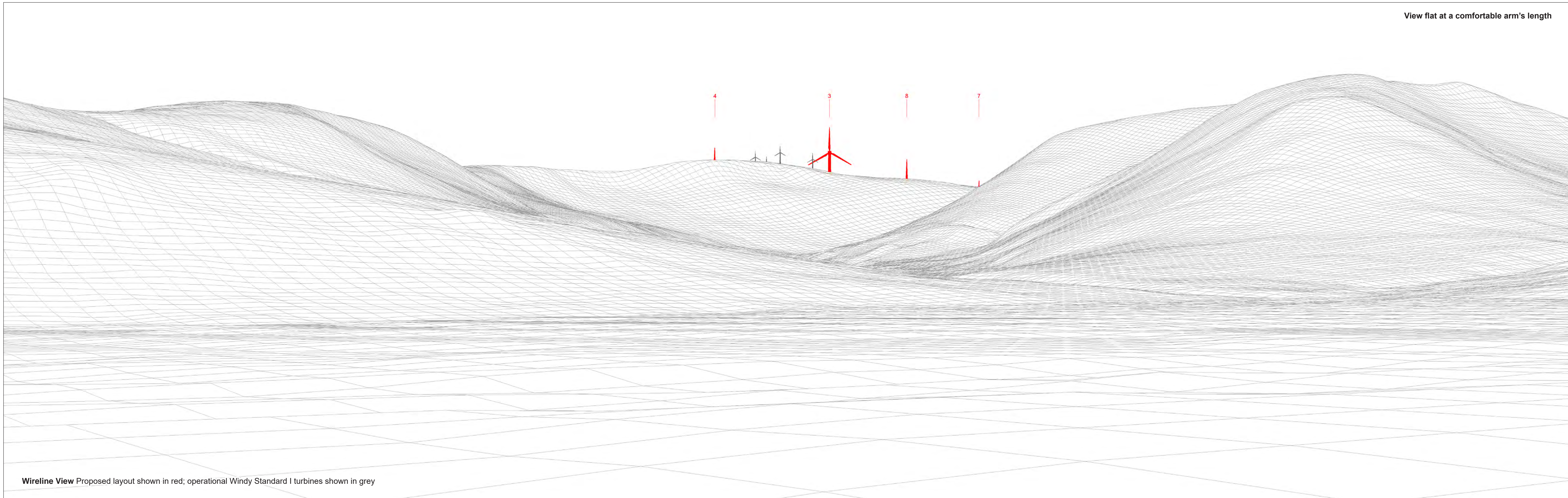


Cumulative Wireline View - Colour indicates current status of developments: Proposed Development / Operational / Under Construction / Consented / Application

OS reference	266004 E 598605 N	Horizontal field of view	90° (cylindrical projection)	Camera	Canon EOS 5D Mark II
Elevation	246.3 m AOD	Principal distance	522 mm	Lens	Canon EF 50mm f/1.4
Direction of view	305°	Paper size	841 x 297 mm (half A1)	Camera height	1.5m AGL
Nearest turbine	5.08 km	Correct printed image size	820 x 130 mm	Date & time taken	17/05/2021 11:30

Figure 1a
Viewpoint 3: Water of Ken Panorama with Cumulative Wireline

© Crown Copyright and database right 2021 Licence Number 0100031673.



Wireline View Proposed layout shown in red; operational Windy Standard I turbines shown in grey

OS reference	266004 E 598605 N	Horizontal field of view	53.5° (planar projection)	Camera	Canon EOS 5D Mark II
Elevation	246.3 m AOD	Principal distance	812.5 mm	Lens	Canon EF 50mm f/1.4
Direction of view	305°	Paper size	841 x 297 mm (half A1)	Camera height	1.5m AGL
Nearest turbine	5.08 km	Correct printed image size	820 x 260 mm	Date & time taken	17/05/2021 11:30



Existing View

OS reference 266004 E 598605 N
Elevation 246.3 m AOD
Direction of view 305°
Nearest turbine 5.08 km

Horizontal field of view 53.5° (planar projection)
Principal distance 812.5 mm
Paper size 841 x 297 mm (half A1)
Correct printed image size 820 x 260 mm

Camera Canon EOS 5D Mark II
Lens Canon EF 50mm f/1.4
Camera height 1.5m AGL
Date & time taken 17/05/2021 11:30

Figure 1c
Viewpoint 3: Water of Ken Panorama



Photomontage

OS reference 266004 E 598605 N
Elevation 246.3 m AOD
Direction of view 305°
Nearest turbine 5.08 km

Horizontal field of view 53.5° (planar projection)
Principal distance 812.5 mm
Paper size 841 x 297 mm (half A1)
Correct printed image size 820 x 260 mm

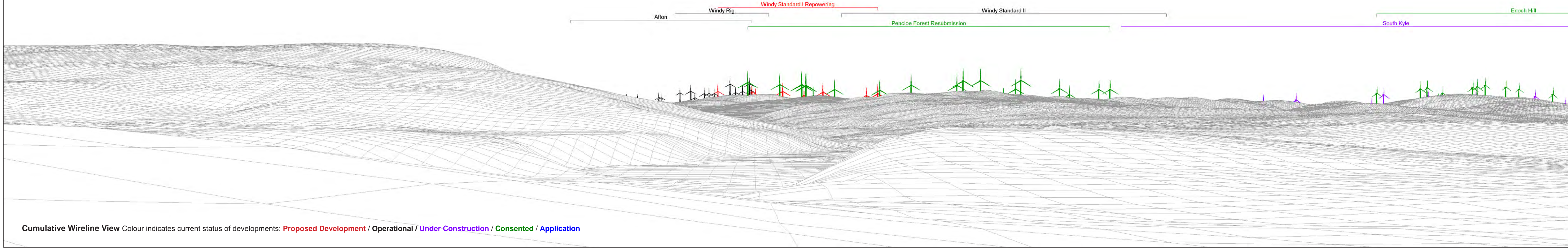
Camera Canon EOS 5D Mark II
Lens Canon EF 50mm f/1.4
Camera height 1.5m AGL
Date & time taken 17/05/2021 11:30

Figure 1d
Viewpoint 3: Water of Ken Photomontage

This image provides landscape and visual context only



Existing View - Photography taken prior to the construction of Windy Rig turbines

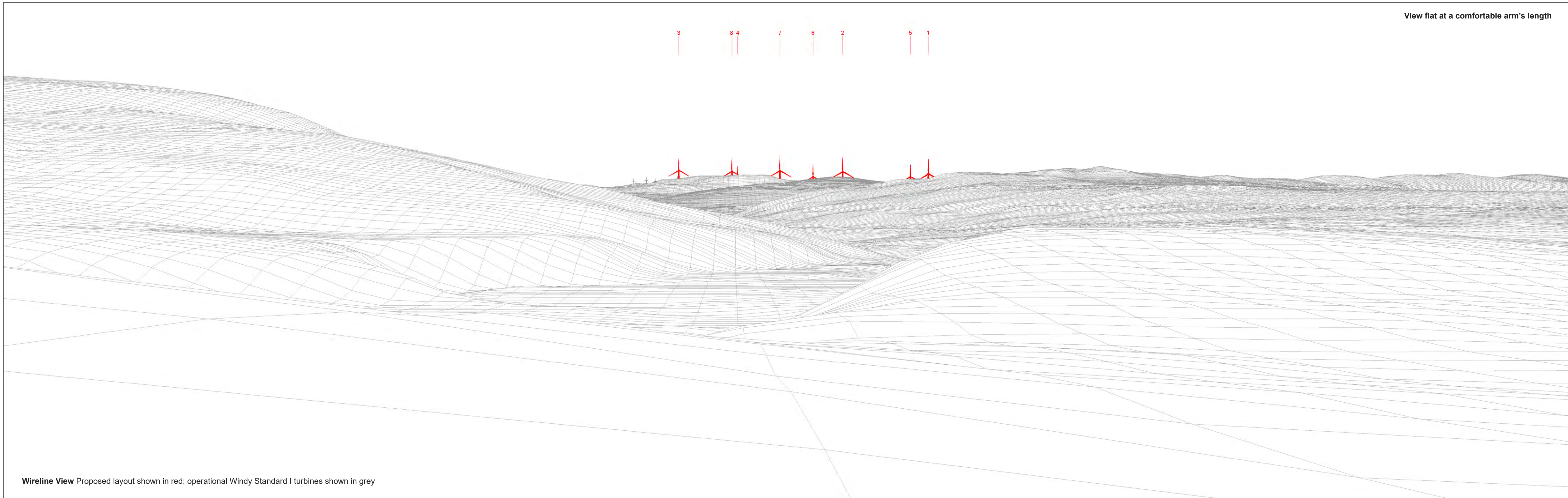


Cumulative Wireline View Colour indicates current status of developments: Proposed Development / Operational / Under Construction / Consented / Application

OS reference	261541 E 612477 N	Horizontal field of view	90° (cylindrical projection)	Camera	Canon EOS 5D Mark II
Elevation	212.1 m AOD	Principal distance	522 mm	Lens	Canon EF 50mm f/1.4
Direction of view	182°	Paper size	841 x 297 mm (half A1)	Camera height	1.5m AGL
Nearest turbine	8.61 km	Correct printed image size	820 x 130 mm	Date & time taken	18/05/2021 15:25

Viewpoint 5: Entrance to cemetery on southern side of New Cumnock Panorama with Cumulative Wireline

Figure 2a



Wireline View Proposed layout shown in red; operational Windy Standard I turbines shown in grey

OS reference	261541 E 612477 N	Horizontal field of view	53.5° (planar projection)	Camera	Canon EOS 5D Mark II
Elevation	212.1 m AOD	Principal distance	812.5 mm	Lens	Canon EF 50mm f/1.4
Direction of view	182°	Paper size	841 x 297 mm (half A1)	Camera height	1.5m AGL
Nearest turbine	8.61 km	Correct printed image size	820 x 260 mm	Date & time taken	18/05/2021 15:25

Figure 2b
Viewpoint 5: Entrance to cemetery on southern side of New Cumnock Wireline



Existing View

OS reference	261541 E 612477 N	Horizontal field of view	53.5° (planar projection)	Camera	Canon EOS 5D Mark II
Elevation	212.1 m AOD	Principal distance	812.5 mm	Lens	Canon EF 50mm f/1.4
Direction of view	182°	Paper size	841 x 297 mm (half A1)	Camera height	1.5m AGL
Nearest turbine	8.61 km	Correct printed image size	820 x 260 mm	Date & time taken	18/05/2021 15:25

Figure 2c

Viewpoint 5: Entrance to cemetery on southern side of New Cumnock Panorama



Photomontage

OS reference 261541 E 612477 N
Elevation 212.1 m AOD
Direction of view 182°
Nearest turbine 8.61 km

Horizontal field of view 53.5° (planar projection)
Principal distance 812.5 mm
Paper size 841 x 297 mm (half A1)
Correct printed image size 820 x 260 mm

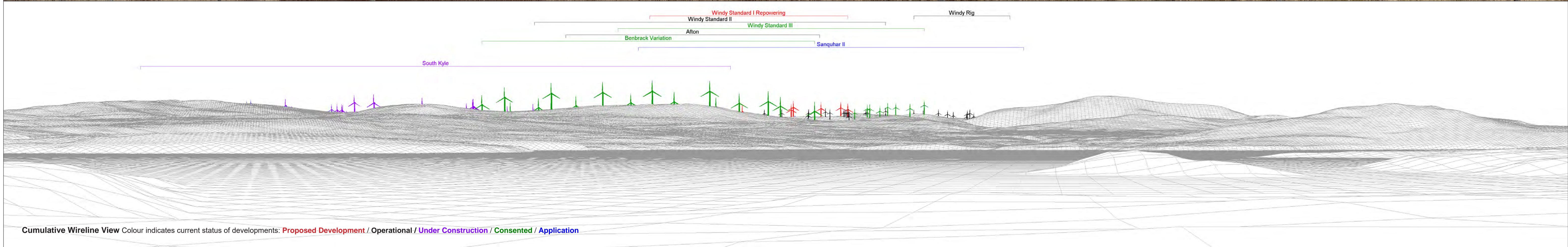
Camera Canon EOS 5D Mark II
Lens Canon EF 50mm f/1.4
Camera height 1.5m AGL
Date & time taken 18/05/2021 15:25

Figure 2d
Viewpoint 5: Entrance to cemetery on southern side of New Cumnock Photomontage

This image provides landscape and visual context only



Existing View - Photography taken prior to the construction of Windy Rig turbines

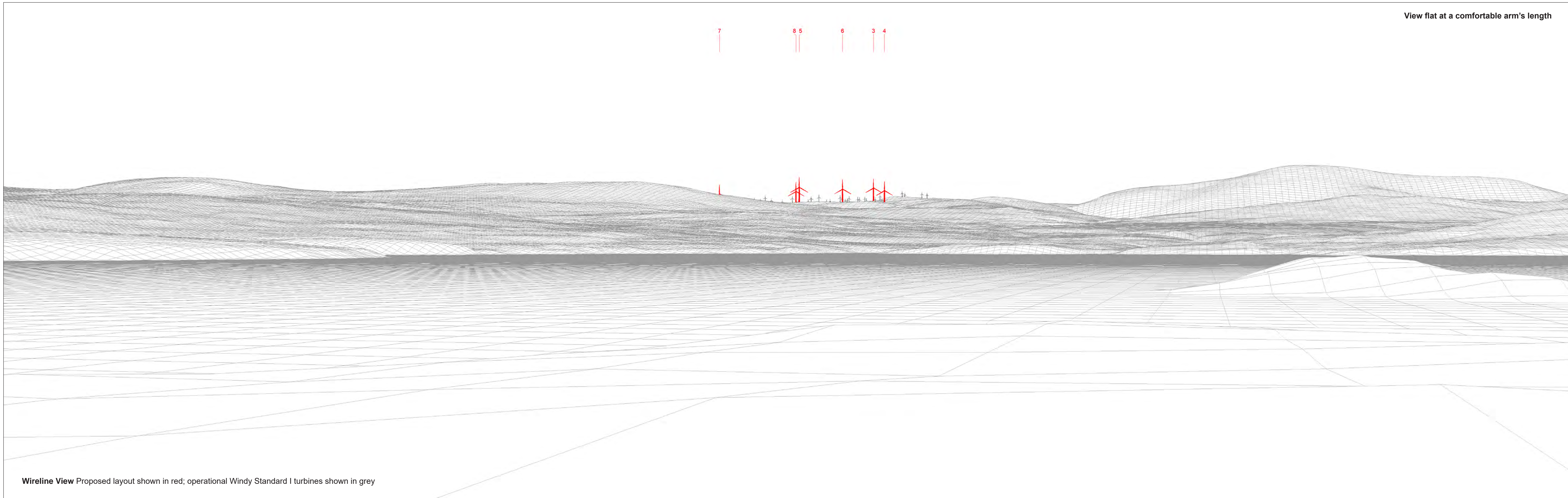


Cumulative Wireline View Colour indicates current status of developments: **Proposed Development** / **Operational** / **Under Construction** / **Consented** / **Application**

OS reference	248098 E 598733 N	Horizontal field of view	90° (cylindrical projection)	Camera	Canon EOS 5D Mark II
Elevation	215.9 m AOD	Principal distance	522 mm	Lens	Canon EF 50mm f/1.4
Direction of view	75°	Paper size	841 x 297 mm (half A1)	Camera height	1.5m AGL
Nearest turbine	12.64 km	Correct printed image size	820 x 130 mm	Date & time taken	21/05/2021 14:20

Figure 3a
Viewpoint 8: Loch Doon Panorama with Cumulative Wireline

© Crown Copyright and database right 2021 Licence Number 0100031673.



Wireline View Proposed layout shown in red; operational Windy Standard I turbines shown in grey

OS reference	248098 E 598733 N	Horizontal field of view	53.5° (planar projection)	Camera	Canon EOS 5D Mark II
Elevation	215.9 m AOD	Principal distance	812.5 mm	Lens	Canon EF 50mm f/1.4
Direction of view	75°	Paper size	841 x 297 mm (half A1)	Camera height	1.5m AGL
Nearest turbine	12.64 km	Correct printed image size	820 x 260 mm	Date & time taken	21/05/2021 14:20

Figure 3b
Viewpoint 8: Loch Doon Wireline

© Crown Copyright and database right 2021 Licence Number 0100031673.

View flat at a comfortable arm's length



Existing View

OS reference 248098 E 598733 N
Elevation 215.9 m AOD
Direction of view 75°
Nearest turbine 12.64 km

Horizontal field of view 53.5° (planar projection)
Principal distance 812.5 mm
Paper size 841 x 297 mm (half A1)
Correct printed image size 820 x 260 mm

Camera Canon EOS 5D Mark II
Lens Canon EF 50mm f/1.4
Camera height 1.5m AGL
Date & time taken 21/05/2021 14:20

Figure 3c
Viewpoint 8: Loch Doon Panorama

© Crown Copyright and database right 2021 Licence Number 0100031673.

View flat at a comfortable arm's length



Photomontage

OS reference	248098 E 598733 N	Horizontal field of view	53.5° (planar projection)	Camera	Canon EOS 5D Mark II
Elevation	215.9 m AOD	Principal distance	812.5 mm	Lens	Canon EF 50mm f/1.4
Direction of view	75°	Paper size	841 x 297 mm (half A1)	Camera height	1.5m AGL
Nearest turbine	12.64 km	Correct printed image size	820 x 260 mm	Date & time taken	21/05/2021 14:20

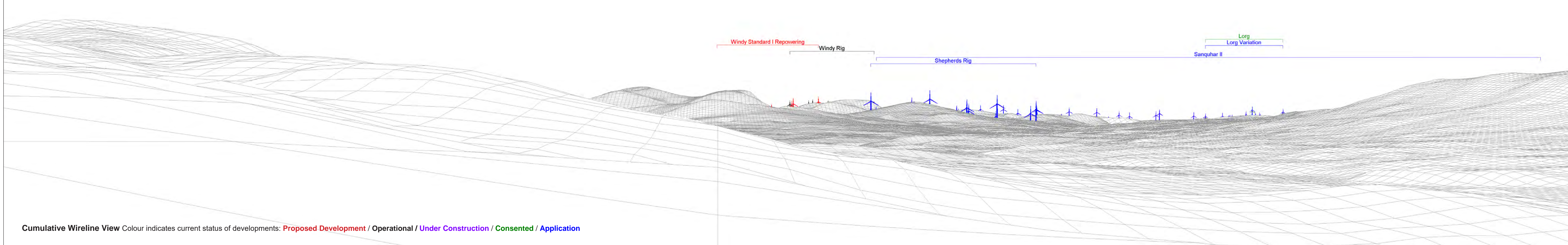
Figure 3d
Viewpoint 8: Loch Doon Photomontage

© Crown Copyright and database right 2021 Licence Number 0100031673.

This image provides landscape and visual context only



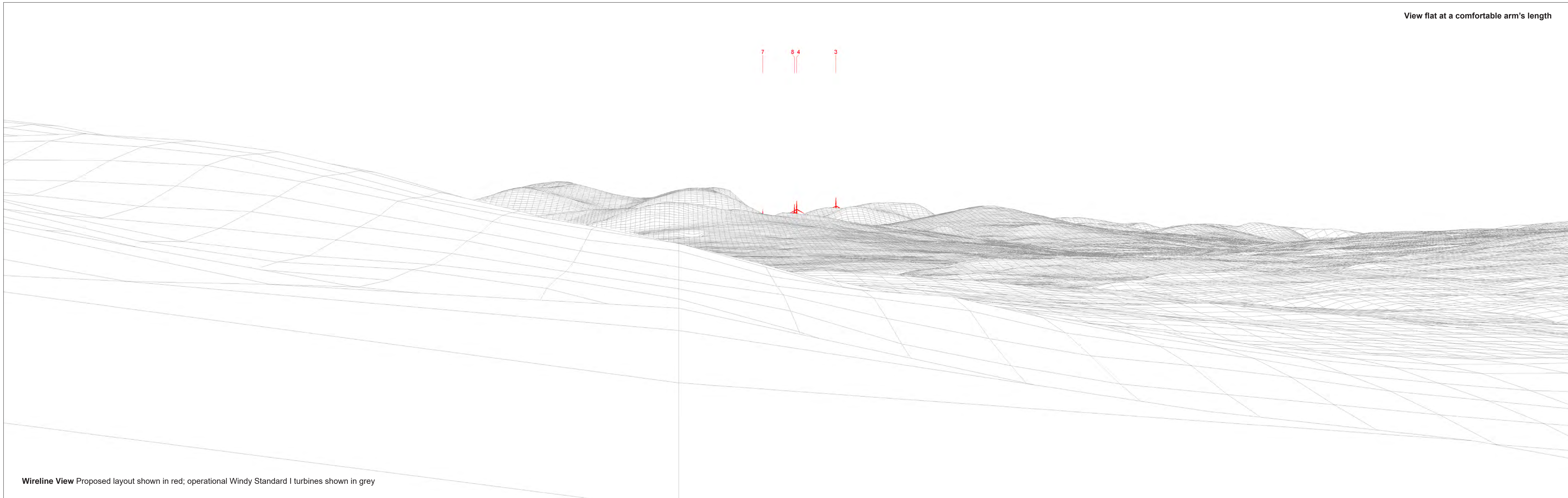
Existing View - Photography taken prior to the construction of Windy Rig turbines



OS reference	260350 E 586111 N	Horizontal field of view	90° (cylindrical projection)	Camera	Canon EOS 5D Mark II
Elevation	125.2 m AOD	Principal distance	522 mm	Lens	Canon EF 50mm f/1.4
Direction of view	4°	Paper size	841 x 297 mm (half A1)	Camera height	1.5m AGL
Nearest turbine	15.38 km	Correct printed image size	820 x 130 mm	Date & time taken	23/05/2021 12:45

Figure 4a
Viewpoint 10: A713 near Carsfad Loch Panorama with Cumulative Wireline

© Crown Copyright and database right 2021 Licence Number 0100031673.



Wireline View Proposed layout shown in red; operational Windy Standard I turbines shown in grey

OS reference	260350 E 586111 N	Horizontal field of view	53.5° (planar projection)	Camera	Canon EOS 5D Mark II
Elevation	125.2 m AOD	Principal distance	812.5 mm	Lens	Canon EF 50mm f/1.4
Direction of view	4°	Paper size	841 x 297 mm (half A1)	Camera height	1.5m AGL
Nearest turbine	15.38 km	Correct printed image size	820 x 260 mm	Date & time taken	23/05/2021 12:45

Figure 4b
Viewpoint 10: A713 near Carsfad Loch Wireline

View flat at a comfortable arm's length



Existing View

OS reference 260350 E 586111 N
Elevation 125.2 m AOD
Direction of view 4°
Nearest turbine 15.38 km

Horizontal field of view 53.5° (planar projection)
Principal distance 812.5 mm
Paper size 841 x 297 mm (half A1)
Correct printed image size 820 x 260 mm

Camera Canon EOS 5D Mark II
Lens Canon EF 50mm f/1.4
Camera height 1.5m AGL
Date & time taken 23/05/2021 12:45

Figure 4c
Viewpoint 10: A713 near Carsfad Loch Panorama



Photomontage

OS reference 260350 E 586111 N
Elevation 125.2 m AOD
Direction of view 4°
Nearest turbine 15.38 km

Horizontal field of view 53.5° (planar projection)
Principal distance 812.5 mm
Paper size 841 x 297 mm (half A1)
Correct printed image size 820 x 260 mm

Camera Canon EOS 5D Mark II
Lens Canon EF 50mm f/1.4
Camera height 1.5m AGL
Date & time taken 23/05/2021 12:45

Figure 4d
Viewpoint 10: A713 near Carsfad Loch Photomontage