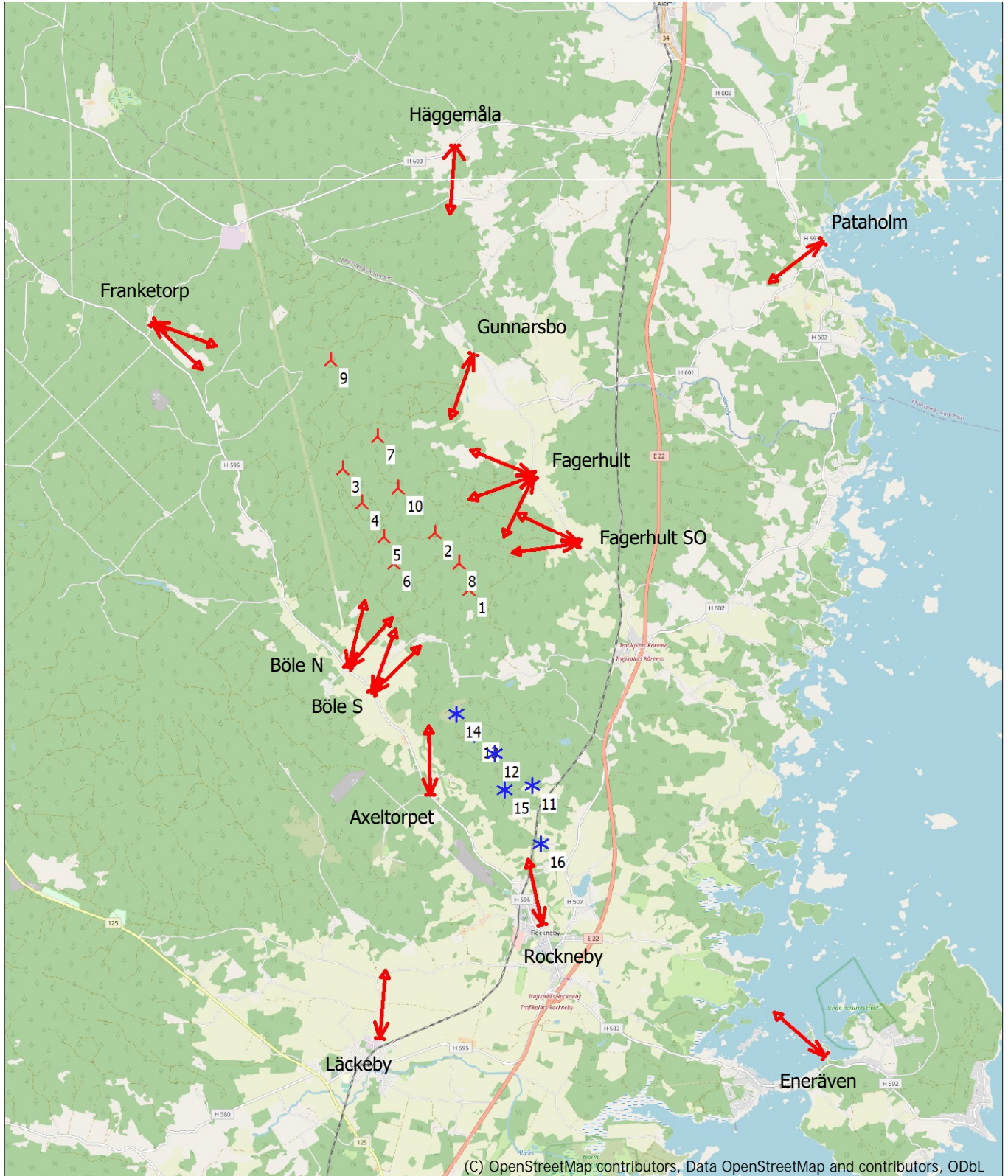


## VISUAL - Map

Calculation: Nycklemossen



0 1 2 3 4 km

Map: EMD OpenStreetMap , Print scale 1:100 000, Map center Swedish UTM 33-SWEREF99 (SE) East: 581 275 North: 6 302 410

▲ New WTG    \* Existing WTG    ↖ Camera



Project:  
Nycklemossen

**Läckeby bygdegård**

Avstånd till närmaste vindkraftverk i Nycklemossen: ca 8 000 meter

Nycklemossen (röd markering), befintliga vindkraftverk (blå markering)

Recommended observation distance: 28 cm

Photo exposed: 2023-01-31 12:00:00

Field of view: 44,2°x30,4° Lens: 44 mm Film: 36x24 mm Pixels: 3872x2592

Eye point: Swedish UTM 33-SWEREF99 (SE) East: 579 428 North: 6 294 449

Wind direction: 0° Direction of photo: 5°

Camera: Läckeby Bygdegård

Photo: C:\...\03 PICTURES\230201 Bilder Montage mm\DSC\_0011.JPG

Created by:

Fred Olsen Renewable Ltd

Ochil House, Springkerse Business Park

GB-STIRLING FX74 7XE

Per Anders Östling / per.anders.ostling@fredolsen.com



Project:  
Nycklemossen

**Rockneby Knappegården**

Avstånd till närmaste vindkraftverk i Nycklemossen: ca 6 000 meter  
Avstånd till närmaste befintliga vindkraftverk: ca 2 500 meter  
Nycklemossen (röd markering), befintliga vindkraftverk (blå markering)

Recommended observation distance: 29 cm

Photo exposed: 2023-01-31 17:00:00

Field of view: 43,1°x29,6° Lens: 46 mm Film: 36x24 mm Pixels: 3872x2592

Eye point: Swedish UTM 33-SWEREF99 (SE) East: 582 309 North: 6 296 551

Wind direction: 0° Direction of photo: 348°

Camera: Rockneby Knappegården

Photo: C:\...\03 PICTURES\230201 Bilder Montage mm\DSC\_0015.JPG

Created by:

Fred Olsen Renewable Ltd  
Ochil House, Springkerse Business Park  
GB-STIRLING FX74 7XE

Per Anders Östling / per.anders.ostling@fredolsen.com



Project:  
Nycklemossen

**Eneräven**

Avstånd till närmaste vindkraftverk i Nycklemossen: ca 10 500 meter

Nycklemossen (röd markering), befintliga vindkraftverk (blå markering)

Recommended observation distance: 33 cm

Photo exposed: 2023-06-13 13:00:00

Field of view: 38,2°x26,0° Lens: 52 mm Film: 36x24 mm Pixels: 6000x4000

Eye point: Swedish UTM 33-SWEREF99 (SE) East: 587 463 North: 6 294 288

Wind direction: 0° Direction of photo: 311°

Camera: Eneräven

Photo: C:\...\Fotomontage juni 2023\Revuddens bad&camping\IMG\_0731.JPG

Created by:

Fred Olsen Renewable Ltd

Ochil House, Springkerse Business Park

GB-STIRLING FX74 7XE

Per Anders Östling / per.anders.ostling@fredolsen.com



Project:  
Nycklemossen

**Axeltorpet**

Avstånd till närmaste vindkraftverk i Nycklemossen: ca 2 700 meter  
Avstånd till närmaste befintliga vindkraftverk: ca 1 100 meter  
Nycklemossen (röd markering), befintliga vindkraftverk (blå markering)

Recommended observation distance: 26 cm

Photo exposed: 2023-06-14 12:00:00

Field of view: 46,8°x32,2° Lens: 42 mm Film: 36x24 mm Pixels: 6000x4000

Eye point: Swedish UTM 33-SWEREF99 (SE) East: 580 247 North: 6 298 856

Wind direction: 0° Direction of photo: 358°

Camera: Axeltorpet NV

Photo: C:\...\Fotomontage juni 2023\Korsning Rumpetorp\IMG\_0866.JPG

Created by:

Fred Olsen Renewable Ltd  
Ochil House, Springkerse Business Park  
GB-STIRLING FX74 7XE

Per Anders Östling / per.anders.ostling@fredolsen.com



Project:  
Nycklemossen

**Böle N, Foto nr.1**

Avstånd till närmaste vindkraftverk i Nycklemossen: ca 1 900 meter

Nycklemossen (röd markering), befintliga vindkraftverk (blå markering)

Recommended observation distance: 31 cm

Photo exposed: 2023-06-14 16:21:27

Field of view: 39,6°x27,0° Lens: 50 mm Film: 36x24 mm Pixels: 6000x4000

Eye point: Swedish UTM 33-SWREF99 (SE) East: 578 726 North: 6 301 115

Wind direction: 0° Direction of photo: 14°

Camera: Böle N

Photo: C:\...\Fotomontage juni 2023\Böle\_kraftledning\IMG\_0813.JPG

Created by:

Fred Olsen Renewable Ltd

Ochil House, Springkerse Business Park

GB-STIRLING FX74 7XE

Per Anders Östling / per.anders.ostling@fredolsen.com



Project:  
Nycklemossen

**Böle N, Foto nr.2**

Avstånd till närmaste vindkraftverk i Nycklemossen: ca 1 900 meter

Nycklemossen (röd markering), befintliga vindkraftverk (blå markering)

Recommended observation distance: 30 cm

Photo exposed: 2023-06-14 16:21:32

Field of view: 41,2°x28,1° Lens: 48 mm Film: 36x24 mm Pixels: 6000x4000

Eye point: Swedish UTM 33-SWEREF99 (SE) East: 578 726 North: 6 301 115

Wind direction: 0° Direction of photo: 41°

Camera: Böle N 2

Photo: C:\...\Fotomontage juni 2023\Böle\_kraftledning\IMG\_0816.JPG

Created by:

Fred Olsen Renewable Ltd

Ochil House, Springkerse Business Park

GB-STIRLING FX74 7XE

Per Anders Östling / per.anders.ostling@fredolsen.com



Project:  
Nycklemossen

**Böle S, Foto nr.1**

Avstånd till närmaste vindkraftverk i Nycklemossen: ca 2 200 meter

Nycklemossen (röd markering), befintliga vindkraftverk (blå markering)

Recommended observation distance: 34 cm

Photo exposed: 2023-06-14 12:00:00

Field of view: 37,1°x25,2° Lens: 54 mm Film: 36x24 mm Pixels: 6000x4000

Eye point: Swedish UTM 33-SWEREF99 (SE) East: 579 172 North: 6 300 677

Wind direction: 0° Direction of photo: 21°

Camera: Böle S

Photo: C:\...\230612\_områdesbesök\Fotomontage juni 2023\Böle\IMG\_0853.JPG

Created by:

Fred Olsen Renewable Ltd

Ochil House, Springkerse Business Park

GB-STIRLING FX74 7XE

Per Anders Östling / per.anders.ostling@fredolsen.com





Project:

Nycklemossen

**Böle S, Foto nr.2**

Avstånd till närmaste vindkraftverk i Nycklemossen: ca 2 200 meter

Nycklemossen (röd markering), befintliga vindkraftverk (blå markering)

Recommended observation distance: 34 cm

Photo exposed: 2023-06-14 18:47:11

Field of view: 37,1°x25,2° Lens: 54 mm Film: 36x24 mm Pixels: 6000x4000

Eye point: Swedish UTM 33-SWEREF99 (SE) East: 579 172 North: 6 300 677

Wind direction: 0° Direction of photo: 45°

Camera: Böle S 2

Photo: C:\...\230612\_områdesbesök\Fotomontage juni 2023\Böle\IMG\_0857.JPG

Created by:

Fred Olsen Renewable Ltd

Ochil House, Springkerse Business Park

GB-STIRLING FX74 7XE

Per Anders Östling / per.anders.ostling@fredolsen.com



Project:  
Nycklemossen

**Franketorp, Foto nr.1**

Avstånd till närmaste vindkraftverk i Nycklemossen: ca 2 600 meter

Nycklemossen (röd markering), befintliga vindkraftverk (blå markering)

Recommended observation distance: 33 cm

Photo exposed: 2023-06-14 18:36:00

Field of view: 37,5°x25,5° Lens: 53 mm Film: 36x24 mm Pixels: 6000x4000

Eye point: Swedish UTM 33-SWEREF99 (SE) East: 575 087 North: 6 307 276

Wind direction: 0° Direction of photo: 110°

Camera: Franketorp

Photo: C:\...\Fotomontage juni 2023\Fanketorp\IMG\_0840.JPG

Created by:

Fred Olsen Renewable Ltd

Ochil House, Springkerse Business Park

GB-STIRLING FX74 7XE

Per Anders Östling / per.anders.ostling@fredolsen.com



Project:  
Nycklemossen

**Franketorp, Foto nr.2**

Avstånd till närmaste vindkraftverk i Nycklemossen: ca 2 600 meter

Nycklemossen (röd markering), befintliga vindkraftverk (blå markering)

Recommended observation distance: 32 cm

Photo exposed: 2023-06-14 18:36:04

Field of view: 38,8°x26,5° Lens: 51 mm Film: 36x24 mm Pixels: 6000x4000

Eye point: Swedish UTM 33-SWEREF99 (SE) East: 575 087 North: 6 307 276

Wind direction: 0° Direction of photo: 134°

Camera: Franketorp 2

Photo: C:\...\Fotomontage juni 2023\Fanketorp\IMG\_0842.JPG

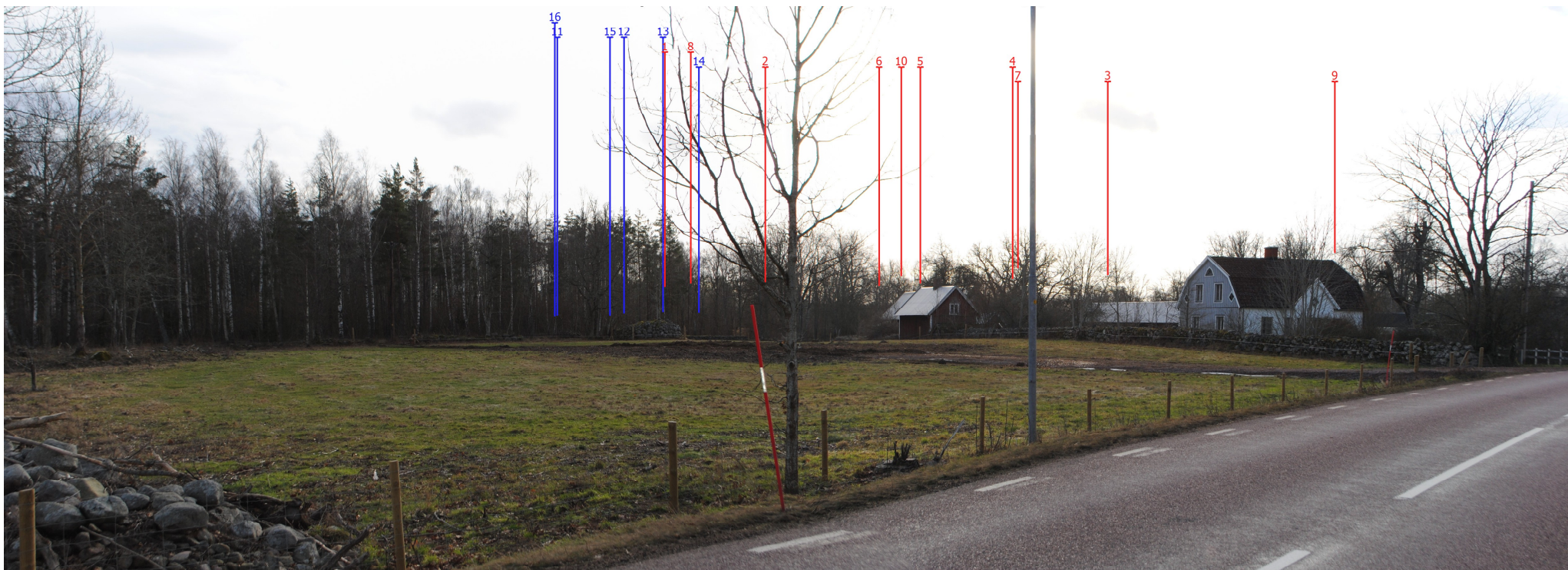
Created by:

Fred Olsen Renewable Ltd

Ochil House, Springkerse Business Park

GB-STIRLING FX74 7XE

Per Anders Östling / per.anders.ostling@fredolsen.com



Project:  
Nycklemossen

**Häggemåla**

Avstånd till närmaste vindkraftverk i Nycklemossen: ca 4 400 meter

Nycklemossen (röd markering), befintliga vindkraftverk (blå markering)

Recommended observation distance: 21 cm

Photo exposed: 2023-01-31 12:00:00

Panorama field of view: 74,6°x26,3° Pixels: 5047x1814

Eye point: Swedish UTM 33-SWREF99 (SE) East: 580 466 North: 6 310 531

Wind direction: 0° Direction of photo: 184°

Camera: Häggemåla

Photo: C:\...\03 PICTURES\230201 Bilder Montage mm\DSC\_0069 - DSC\_0071.jpg

Created by:

Fred Olsen Renewable Ltd

Ochil House, Springkerse Business Park

GB-STIRLING FX74 7XE

Per Anders Östling / per.anders.ostling@fredolsen.com



Project:  
Nycklemossen

**Pataholm**

Avstånd till närmaste vindkraftverk i Nycklemossen: ca 8 200 meter

Nycklemossen (röd markering), befintliga vindkraftverk (blå markering)

Recommended observation distance: 34 cm

Photo exposed: 2023-06-13 16:12:20

Field of view: 36,7°x24,9° Lens: 54 mm Film: 36x24 mm Pixels: 6000x4000

Eye point: Swedish UTM 33-SWEREF99 (SE) East: 587 118 North: 6 308 959

Wind direction: 0° Direction of photo: 231°

Camera: Pataholm

Photo: C:\...\Fotomontage juni 2023\Pataholm\IMG\_0717.JPG

Created by:

Fred Olsen Renewable Ltd

Ochil House, Springkerse Business Park

GB-STIRLING FX74 7XE

Per Anders Östling / per.anders.ostling@fredolsen.com



Project:  
Nycklemossen

**Gunnarsbo**

Avstånd till närmaste vindkraftverk i Nycklemossen: ca 2 000 meter

Nycklemossen (röd markering), befintliga vindkraftverk (blå markering)

Recommended observation distance: 31 cm

Photo exposed: 2023-06-14 08:21:53

Field of view: 40,0°x27,3° Lens: 49 mm Film: 36x24 mm Pixels: 6000x4000

Eye point: Swedish UTM 33-SWEREF99 (SE) East: 580 879 North: 6 306 815

Wind direction: 0° Direction of photo: 199°

Camera: Gunnarsbo

Photo: C:\...\Fotomontage juni 2023\Gunnarsbo\IMG\_0785.JPG

Created by:

Fred Olsen Renewable Ltd

Ochil House, Springkerse Business Park

GB-STIRLING FX74 7XE

Per Anders Östling / per.anders.ostling@fredolsen.com



Project:  
Nycklemossen

**Fagerhult SO, Foto nr.1**

Avstånd till närmaste vindkraftverk i Nycklemossen: ca 2 100 meter

Nycklemossen (röd markering), befintliga vindkraftverk (blå markering)

Recommended observation distance: 32 cm

Photo exposed: 2023-06-14 07:58:53

Field of view: 39,2°x26,7° Lens: 51 mm Film: 36x24 mm Pixels: 6000x4000

Eye point: Swedish UTM 33-SWREF99 (SE) East: 582 839 North: 6 303 431

Wind direction: 0° Direction of photo: 262°

Camera: Fagerhult SO

Photo: C:\...\Fotomontage juni 2023\Fagerhult\_Nygård\IMG\_0750.JPG

Created by:

Fred Olsen Renewable Ltd

Ochil House, Springkerse Business Park

GB-STIRLING FX74 7XE

Per Anders Östling / per.anders.ostling@fredolsen.com



Project:  
Nycklemossen

**Fagerhult SO, Foto nr.2**

Avstånd till närmaste vindkraftverk i Nycklemossen: ca 2 100 meter

Nycklemossen (röd markering), befintliga vindkraftverk (blå markering)

Recommended observation distance: 32 cm

Photo exposed: 2023-06-14 07:59:07

Field of view: 38,8°x26,5° Lens: 51 mm Film: 36x24 mm Pixels: 6000x4000

Eye point: Swedish UTM 33-SWREF99 (SE) East: 582 839 North: 6 303 431

Wind direction: 0° Direction of photo: 296°

Camera: Fagerhult SO 2

Photo: C:\...\Fotomontage juni 2023\Fagerhult\_Nygård\IMG\_0757.JPG

Created by:

Fred Olsen Renewable Ltd

Ochil House, Springkerse Business Park

GB-STIRLING FX74 7XE

Per Anders Östling / per.anders.ostling@fredolsen.com





Project:  
Nycklemossen

**Fagerhult, Foto nr.1**

Avstånd till närmaste vindkraftverk i Nycklemossen: ca 2 000 meter

Nycklemossen (röd markering), befintliga vindkraftverk (blå markering)

Recommended observation distance: 33 cm

Photo exposed: 2023-06-14 08:08:22

Field of view: 38,2°x26,0° Lens: 52 mm Film: 36x24 mm Pixels: 6000x4000

Eye point: Swedish UTM 33-SWREF99 (SE) East: 582 007 North: 6 304 637

Wind direction: 0° Direction of photo: 206°

Camera: Fagerhult

Photo: C:\...\Fotomontage juni 2023\Fagerhult\IMG\_0763.JPG

Created by:

Fred Olsen Renewable Ltd

Ochil House, Springkerse Business Park

GB-STIRLING FX74 7XE

Per Anders Östling / per.anders.ostling@fredolsen.com



Project:  
Nycklemossen

**Fagerhult, Foto nr.2**

Avstånd till närmaste vindkraftverk i Nycklemossen: ca 2 000 meter

Nycklemossen (röd markering), befintliga vindkraftverk (blå markering)

Recommended observation distance: 30 cm

Photo exposed: 2023-06-14 08:08:34

Field of view: 41,5°x28,4° Lens: 48 mm Film: 36x24 mm Pixels: 6000x4000

Eye point: Swedish UTM 33-SWEREF99 (SE) East: 582 007 North: 6 304 637

Wind direction: 0° Direction of photo: 250°

Camera: Fagerhult 2

Photo: C:\...\Fotomontage juni 2023\Fagerhult\IMG\_0769.JPG

Created by:

Fred Olsen Renewable Ltd

Ochil House, Springkerse Business Park

GB-STIRLING FX74 7XE

Per Anders Östling / per.anders.ostling@fredolsen.com



Project:  
Nycklemossen

**Fagerhult, Foto nr.3**

Avstånd till närmaste vindkraftverk i Nycklemossen: ca 2 000 meter

Nycklemossen (röd markering), befintliga vindkraftverk (blå markering)

Recommended observation distance: 32 cm

Photo exposed: 2023-06-14 08:08:45

Field of view: 39,0°x26,5° Lens: 51 mm Film: 36x24 mm Pixels: 6000x4000

Eye point: Swedish UTM 33-SWEREF99 (SE) East: 582 007 North: 6 304 637

Wind direction: 0° Direction of photo: 292°

Camera: Fagerhult 3

Photo: C:\...\Fotomontage juni 2023\Fagerhult\IMG\_0775.JPG

Created by:

Fred Olsen Renewable Ltd

Ochil House, Springkerse Business Park

GB-STIRLING FX74 7XE

Per Anders Östling / per.anders.ostling@fredolsen.com