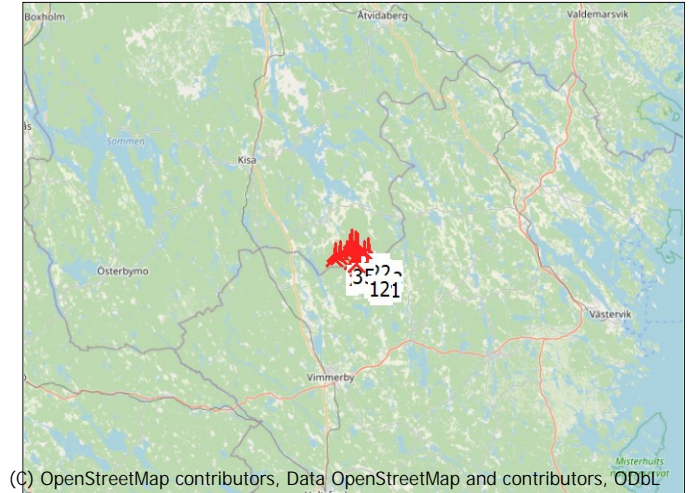
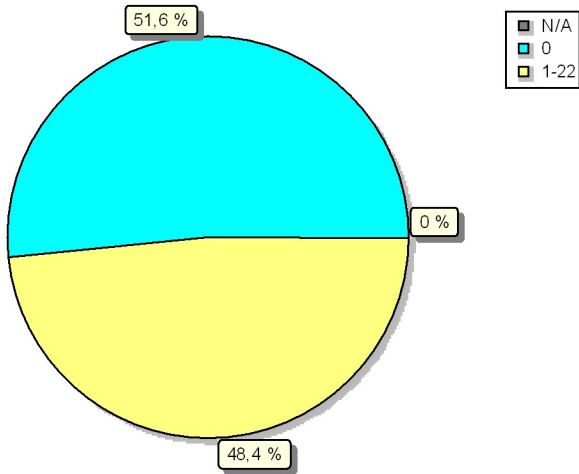


ZVI - Standard ZVI summary

Calculation: 240902_ZVI_No_forest_new_layout

Area with specific number of WTGs visible



New WTG

Assumptions for ZVI calculation

Center for calculation	Swedish UTM 33-SWREF99 (SE) East: 554 306 North: 6 412 618
Width of calculation area	60 000 m
Height of calculation area	60 000 m
Calculation step	25 m
Eye height	1,5 m
Calculation area	356 771 ha
WTG Calculation height	Total height
Obstacles not used in calculation	
DHM object	Height Contours: CONTOURLINE_ONLINEDATA_0.wpo (1)
No area objects used in calculation	
No grid objects used in calculation	
New WTGs used in calculation	22
Existing WTGs used in calculation	0

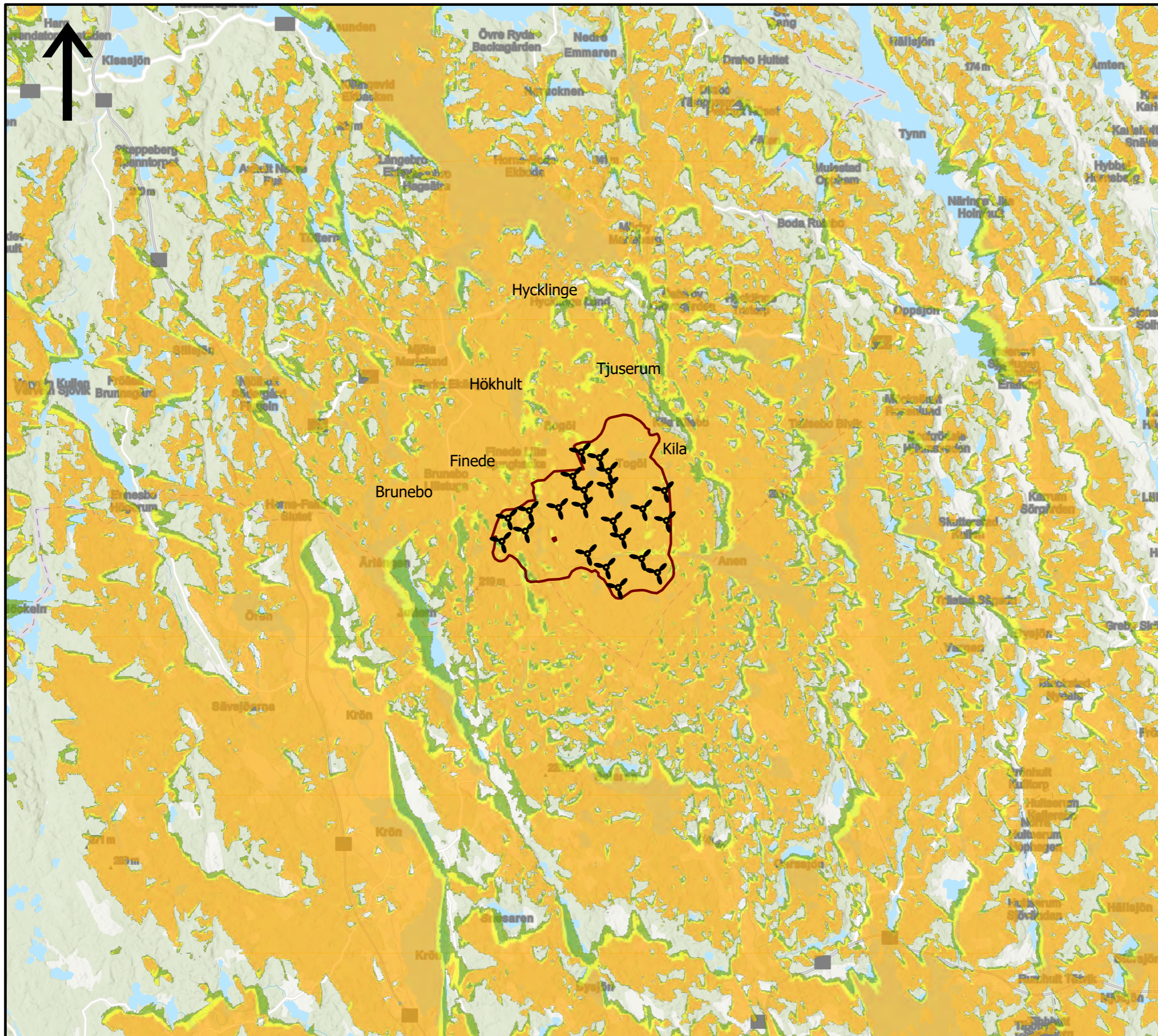
No maximum distance to WTG

ZVI Results





WTGs visible	Area [ha]	Area [%]
N/A	0	0,0
0	183 942	51,6
1	5 562	1,6
2	3 910	1,1
3	3 448	1,0
4	4 324	1,2
5	2 982	0,8
6	2 534	0,7
7	2 738	0,8
8	2 493	0,7
9	2 580	0,7
10	2 620	0,7
11	2 562	0,7
12	2 817	0,8
13	2 590	0,7
14	3 097	0,9
15	3 132	0,9
16	3 381	0,9
17	3 730	1,0
18	4 105	1,2
19	4 073	1,1
20	4 717	1,3
21	5 591	1,6
22	99 843	28,0

WTGs

Valid	Manufact.	Type-generator	Power, rated [kW]	Rotor diameter [m]	Hub height [m]	Easting	Northing	Z [m]
1	Yes	Siemens Gamesa SG 6.6-170-6 600	6 600	170,0	185,0	554 206	6 414 511	175,9
2	Yes	Siemens Gamesa SG 6.6-170-6 600	6 600	170,0	185,0	551 490	6 411 457	170,0
3	Yes	Siemens Gamesa SG 6.6-170-6 600	6 600	170,0	185,0	552 427	6 412 508	164,9
4	Yes	Siemens Gamesa SG 6.6-170-6 600	6 600	170,0	185,0	554 302	6 413 209	180,0
5	Yes	Siemens Gamesa SG 6.6-170-6 600	6 600	170,0	185,0	554 291	6 412 659	180,0
6	Yes	Siemens Gamesa SG 6.6-170-6 600	6 600	170,0	185,0	555 139	6 413 856	187,1
7	Yes	Siemens Gamesa SG 6.6-170-6 600	6 600	170,0	185,0	551 701	6 412 248	160,0
8	Yes	Siemens Gamesa SG 6.6-170-6 600	6 600	170,0	185,0	555 295	6 412 151	173,0
9	Yes	Siemens Gamesa SG 6.6-170-6 600	6 600	170,0	185,0	556 310	6 412 564	180,0
10	Yes	Siemens Gamesa SG 6.6-170-6 600	6 600	170,0	185,0	557 052	6 413 187	175,1
11	Yes	Siemens Gamesa SG 6.6-170-6 600	6 600	170,0	185,0	556 813	6 410 387	163,9
12	Yes	Siemens Gamesa SG 6.6-170-6 600	6 600	170,0	185,0	555 056	6 410 567	170,0
13	Yes	Siemens Gamesa SG 6.6-170-6 600	6 600	170,0	185,0	556 267	6 410 863	170,0
14	Yes	Siemens Gamesa SG 6.6-170-6 600	6 600	170,0	185,0	555 605	6 411 608	179,3
15	Yes	Siemens Gamesa SG 6.6-170-6 600	6 600	170,0	185,0	552 287	6 411 806	160,0
16	Yes	Siemens Gamesa SG 6.6-170-6 600	6 600	170,0	185,0	554 829	6 414 319	180,0
17	Yes	Siemens Gamesa SG 6.6-170-6 600	6 600	170,0	185,0	555 468	6 409 874	160,0
18	Yes	Siemens Gamesa SG 6.6-170-6 600	6 600	170,0	185,0	557 117	6 412 165	153,1
19	Yes	Siemens Gamesa SG 6.6-170-6 600	6 600	170,0	185,0	553 433	6 412 608	150,0
20	Yes	Siemens Gamesa SG 6.6-170-6 600	6 600	170,0	185,0	554 418	6 411 032	150,4
21	Yes	Siemens Gamesa SG 6.6-170-6 600	6 600	170,0	185,0	553 914	6 413 683	160,0
22	Yes	Siemens Gamesa SG 6.6-170-6 600	6 600	170,0	185,0	555 156	6 413 339	170,0



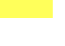



Synbarhetsanalys

-  Vindkraftverk
-  Projektområde
-  vindpark
-  Hycklinge

Synbarhetsanalys utan träd

Antal synliga verk

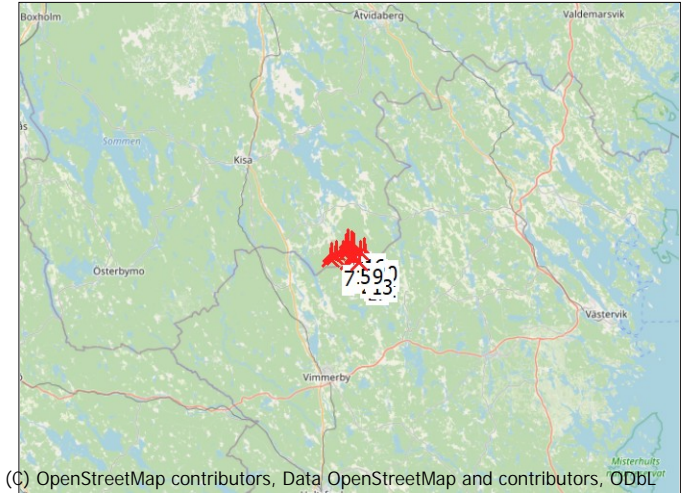
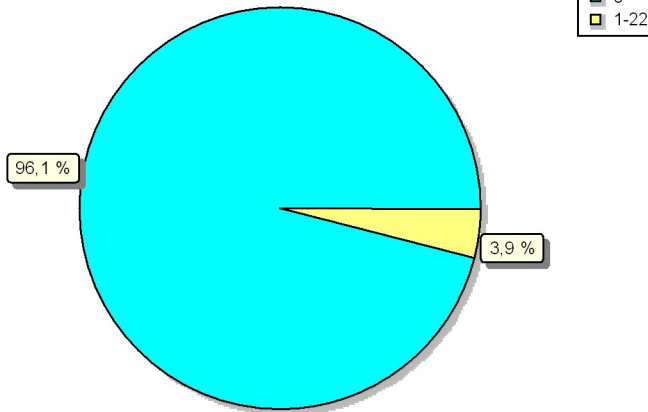
-  0
-  1-7
-  8-14
-  15-22



ZVI - Standard ZVI summary

Calculation: 240902_ZVI_Forest_new_layout

Area with specific number of WTGs visible



Scale 1:1 250 000

New WTG

Assumptions for ZVI calculation

Center for calculation
Width of calculation area
Height of calculation area
Calculation step
Eye height
Calculation area
WTG Calculation height
Obstacles not used in calculation
DHM object
Area object(s) used in calculation
Height of background area type
No grid objects used in calculation
New WTGs used in calculation
Existing WTGs used in calculation

Swedish UTM 33-SWREF99 (SE) East: 554 306 North: 6 412 618
60 000 m
60 000 m
25 m
1,5 m
356 772 ha
Total height

Height Contours: CONTOURLINE_ONLINEDATA_0.wpo (1)
Area object (Heights a.g.l. for e.g. Forest (ORA tool) or ZVI obstructions): REGIONS_231026Hycklinge_1.w2r (2)
0,00 m

22
0

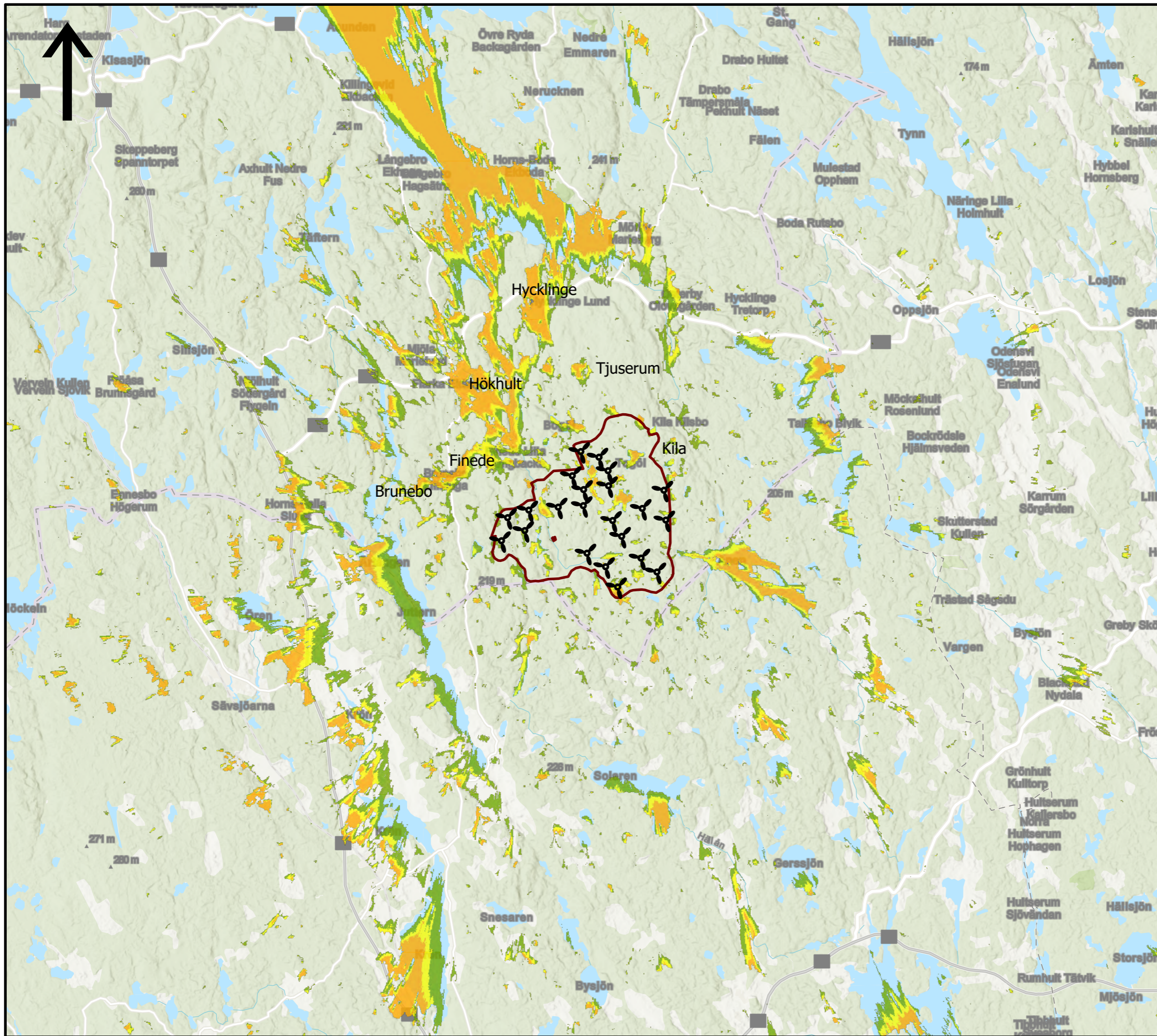
No maximum distance to WTG

ZVI Results





WTGs visible	Area [ha]	Area [%]
0	342 837	96,1
1	1 452	0,4
2	1 122	0,3
3	866	0,2
4	1 060	0,3
5	660	0,2
6	543	0,2
7	520	0,1
8	460	0,1
9	436	0,1
10	431	0,1
11	424	0,1
12	425	0,1
13	376	0,1
14	398	0,1
15	378	0,1
16	382	0,1
17	425	0,1
18	474	0,1
19	443	0,1
20	432	0,1
21	481	0,1
22	1 749	0,5

WTGs

Valid	Manufact.	Type-generator	Power, rated [kW]	Rotor diameter [m]	Hub height [m]	Easting	Northing	Z [m]
1	Yes	Siemens Gamesa SG 6.6-170-6 600	6 600	170,0	185,0	554 206	6 414 511	175,9
2	Yes	Siemens Gamesa SG 6.6-170-6 600	6 600	170,0	185,0	551 490	6 411 457	170,0
3	Yes	Siemens Gamesa SG 6.6-170-6 600	6 600	170,0	185,0	552 427	6 412 508	164,9
4	Yes	Siemens Gamesa SG 6.6-170-6 600	6 600	170,0	185,0	554 302	6 413 209	180,0
5	Yes	Siemens Gamesa SG 6.6-170-6 600	6 600	170,0	185,0	554 291	6 412 659	180,0
6	Yes	Siemens Gamesa SG 6.6-170-6 600	6 600	170,0	185,0	555 139	6 413 856	187,1
7	Yes	Siemens Gamesa SG 6.6-170-6 600	6 600	170,0	185,0	551 701	6 412 248	160,0
8	Yes	Siemens Gamesa SG 6.6-170-6 600	6 600	170,0	185,0	555 295	6 412 151	173,0
9	Yes	Siemens Gamesa SG 6.6-170-6 600	6 600	170,0	185,0	556 310	6 412 564	180,0
10	Yes	Siemens Gamesa SG 6.6-170-6 600	6 600	170,0	185,0	557 052	6 413 187	175,1
11	Yes	Siemens Gamesa SG 6.6-170-6 600	6 600	170,0	185,0	556 813	6 410 387	163,9
12	Yes	Siemens Gamesa SG 6.6-170-6 600	6 600	170,0	185,0	555 056	6 410 567	170,0
13	Yes	Siemens Gamesa SG 6.6-170-6 600	6 600	170,0	185,0	556 267	6 410 863	170,0
14	Yes	Siemens Gamesa SG 6.6-170-6 600	6 600	170,0	185,0	555 605	6 411 608	179,3
15	Yes	Siemens Gamesa SG 6.6-170-6 600	6 600	170,0	185,0	552 287	6 411 806	160,0
16	Yes	Siemens Gamesa SG 6.6-170-6 600	6 600	170,0	185,0	554 829	6 414 319	180,0
17	Yes	Siemens Gamesa SG 6.6-170-6 600	6 600	170,0	185,0	555 468	6 409 874	160,0
18	Yes	Siemens Gamesa SG 6.6-170-6 600	6 600	170,0	185,0	557 117	6 412 165	153,1
19	Yes	Siemens Gamesa SG 6.6-170-6 600	6 600	170,0	185,0	553 433	6 412 608	150,0
20	Yes	Siemens Gamesa SG 6.6-170-6 600	6 600	170,0	185,0	554 418	6 411 032	150,4
21	Yes	Siemens Gamesa SG 6.6-170-6 600	6 600	170,0	185,0	553 914	6 413 683	160,0
22	Yes	Siemens Gamesa SG 6.6-170-6 600	6 600	170,0	185,0	555 156	6 413 339	170,0







Synbarhetsanalys

-  Vindkraftverk
-  Projektområde
-  vindpark
-  Hycklinge

Synbarhetsanalys med träd

Antal synliga verk

-  0
-  1-7
-  8-14
-  15-22

